

簡易呼吸道評估及操作

通氣困難MOANS

The MOANS© mnemonic for difficult bag mask ventilation

Mask seal	面罩密合
Obesity/Obstruction	肥胖/阻塞
Aged (over 55 years)	年齡 > 55
No teeth	無牙齒
Stiff lungs	肺部疾病

© The Difficult Airway Course®: Emergency.

插管困難 LEMON

The LEMON© mnemonic for predicting the difficult emergency airway

Look externally	外觀異常/極端
Evaluate 3-3-2	3-3-2
Mallampati	
Obstruction/Obesity	阻塞/肥胖
Neck mobility	頸部活動度

© The Difficult Airway Course©: Emergency.

E: Evaluate (3-3-2 rule)

3 fingers between the open incisors

3 fingers along the floor of the mandible
(mentum to hyoid)

2 fingers from the laryngeal prominence to
hyoid

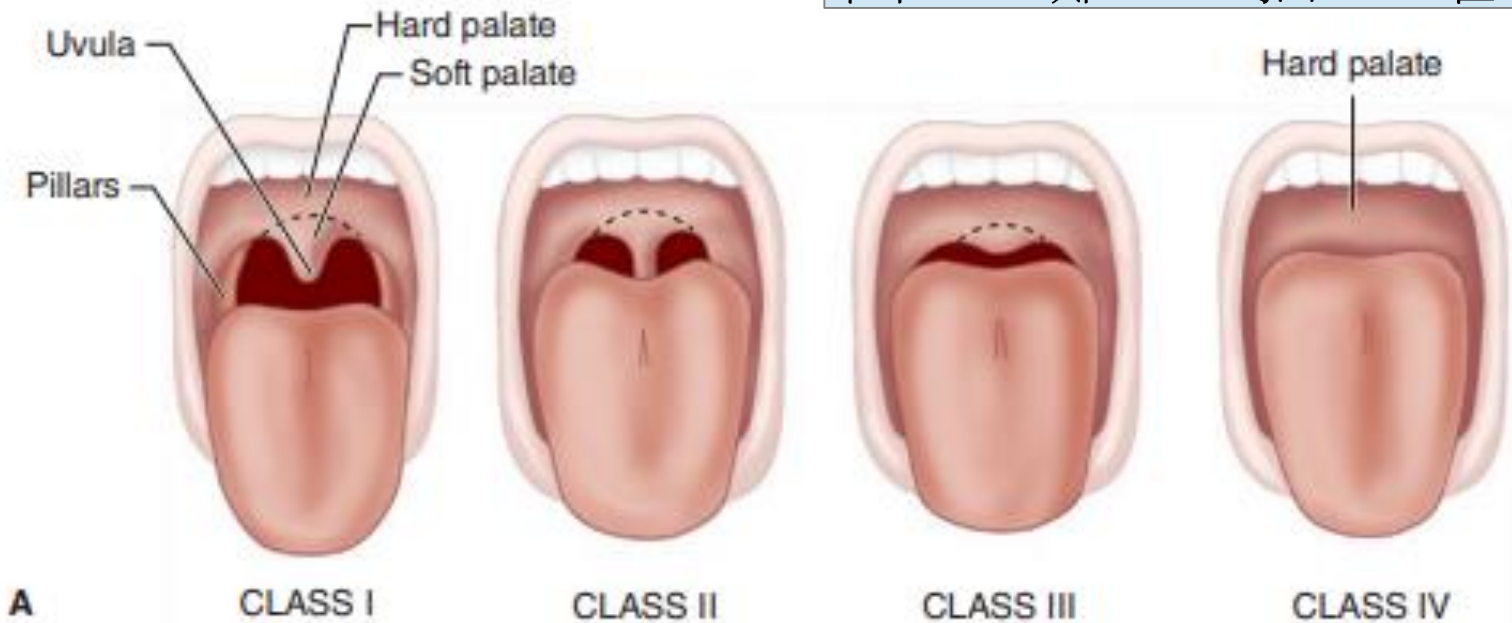


Mallampati分類

坐姿+張口+盡量吐出舌頭+-“啊”

多準備其他插管工具

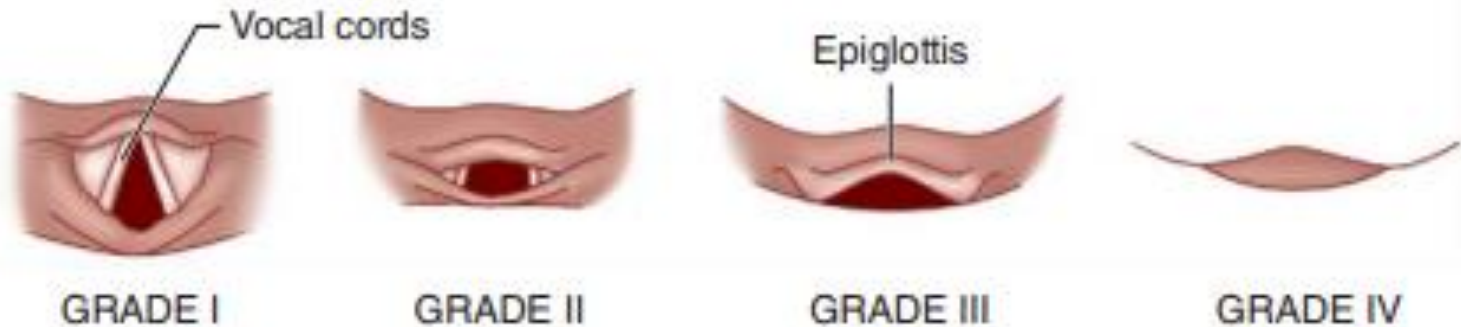
困難插管

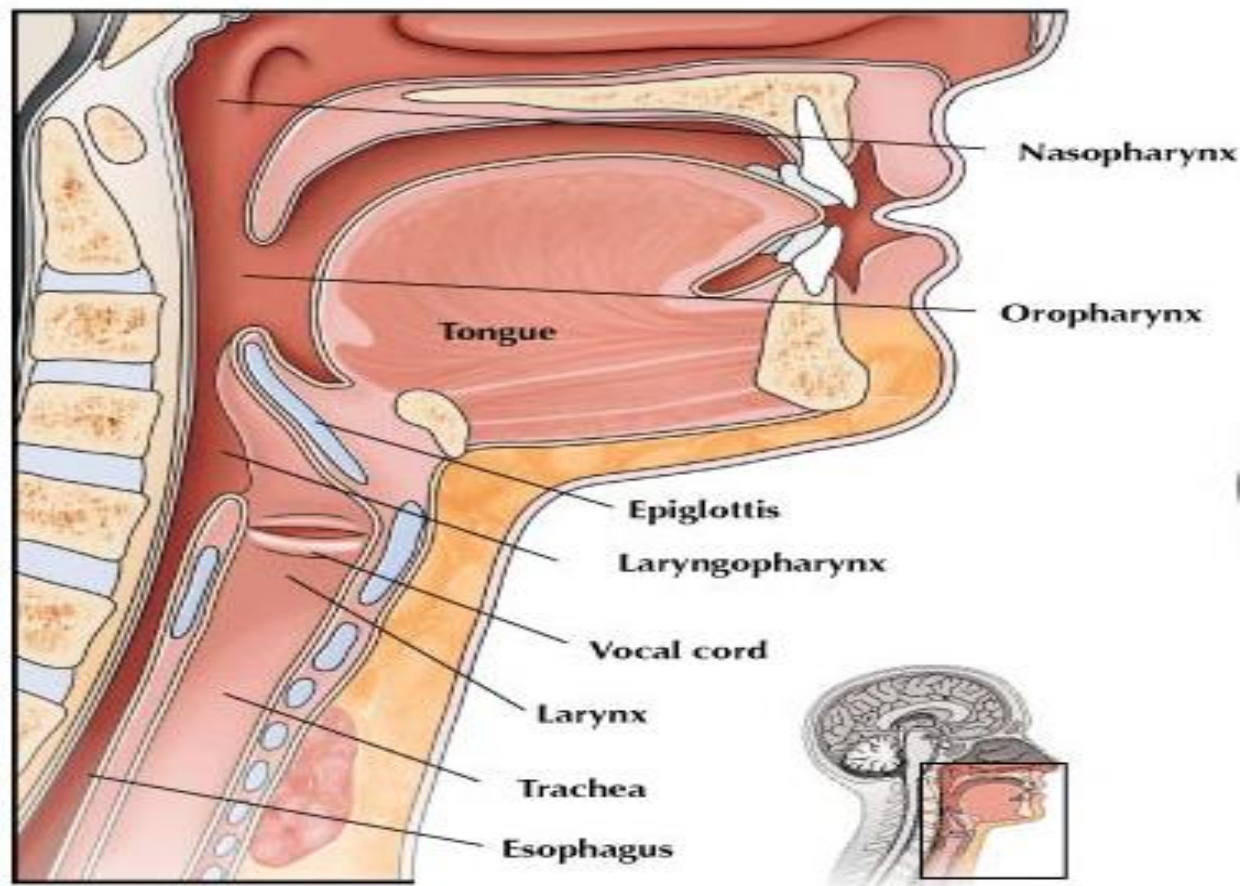


Direct laryngoscope view (Cormack and Lehane)

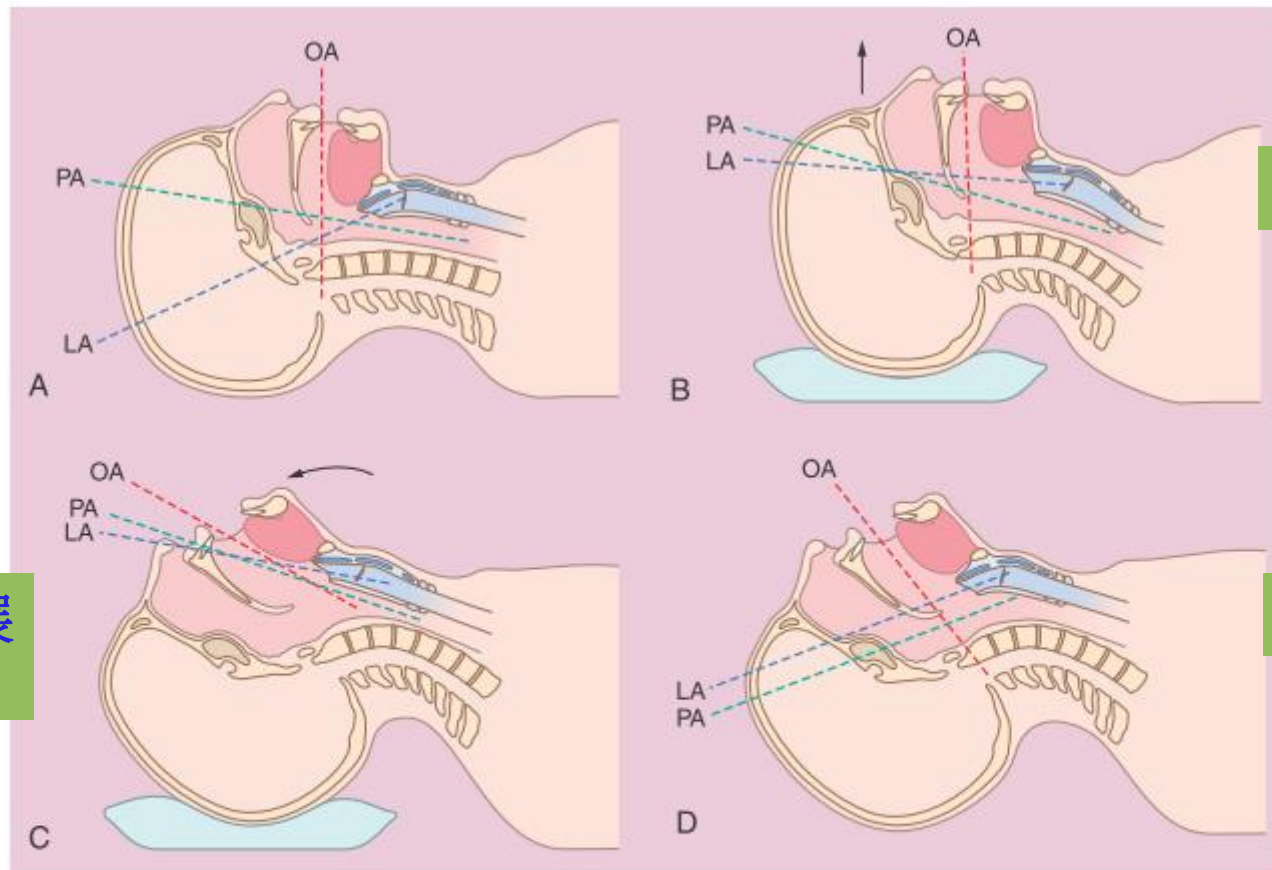
多準備其他插管工具

困難插管





MID-SAGITTAL VIEW



頸部墊高

頸部伸展
+ 墊高

頸部伸展

Figure 16-8 Schematic diagram showing alignment of the oral axis (OA), pharyngeal axis (PA), and laryngeal axis (LA) in four different head positions. Each head position is accompanied by an inset that magnifies the upper airway (the oral cavity, pharynx, and larynx) and superimposes, as a variously bent bold dotted line, the continuity of these three axes with the upper airway. **A**, The head is in a neutral position with a marked degree of nonalignment of the OA, PA, and LA. **B**, The head is resting on a large pad that flexes the neck on the chest and the LA with the PA. **C**, The head is resting on a pad (which flexes the neck on the chest) with concomitant extension of the head on the neck, which brings all three axes into alignment (sniffing position). **D**, Extension of the head on the neck without concomitant elevation of the head.