



最新訊息 林佑融 助理研究員 - 2016-01-26, 週二 00:00 (/cmdr/index.php/15-team-

中心主任 黃志揚講座教授暨副院長



偉人

花蓮慈濟醫院

chih yang huang

university taiwan

china medical

medical university

亞洲大學

中醫

asia university

特聘教授

中國醫藥大學

cmu edu

shibata

ecam

醫學研究

癌症

醫師



中心主任黃志揚講座教授...
him.tzuchi.com.tw



美國(eCAM)雜誌創辦人Cooper到亞太演講！...
web.asia.edu.tw



東京都癌症中心Shibata教授亞太演講...
web.asia.edu.tw



黃志揚- 全人教育中心
ged.tcust.edu.tw



China Medical University, Taiwan 中國醫藥...
cmurdc.cmu.edu.tw



中國醫藥大學榮登世界學術頂尖500大學Chi...
cmu.edu.tw



Asia University, Taiwan 歡...
asia.edu.tw



China Medical University, Taiwan 中國醫...
cmurdc.cmu.edu.tw



黃志揚講座教授- Asia U...
bts.asia.edu.tw



中國醫藥大學醫學院動態展第二部頁鳴謝人物誌。看...
youtube.com



美國(eCAM)雜誌創辦人Cooper到亞太演講！- Asia...
web.asia.edu.tw



慈濟產學聯合共創生命新契機
tzuchi.org.tw



2019-05-06_「中亞聯大」學術合作學術研討會！
亞太



中國醫藥大學榮登世界學術頂尖500大學Chin...
cmu.edu.tw



大冠發表稿不泊保健食品- 財經...
chinatimes.com



2017-04-27_中亞聯大學術合作學術研討會登...
亞太



黃志揚講座教授- Asia University, Taiwan亞洲大學...
asia.edu.tw



中心主任黃志揚講座教...
asia.edu.tw



黃志揚講座教授- Asia University, Taiwan亞洲大學生物科技...
asia.edu.tw



2019全球最佳大學中亞聯大雙雙入榜- 生活- 中時...
chinatimes.com



中心主任黃志揚講座教授...
asia.edu.tw



China Medical University, Taiwan 中國醫...
cmurdc.cmu.edu.tw

現 職

- 花蓮慈濟醫院-副院長
- 花蓮慈濟醫院-心血管暨粒腺體相關疾病研究中心主任
- 亞洲大學-兼任講座教授
- 中醫大生醫所-兼任教授及醫研部顧問
- 中醫大附屬長聖細胞療法生技公司董事
- 中醫大及廣州醫科大學附屬清遠人民醫院產學計畫聘任-研究總顧問

學 歷

- 台灣 陽明大學生理所 心臟內分泌學碩士(1987-1989)
- 美國 伊利諾大學香檳校區分子生理所 乳癌分子醫學碩士(1992-1995)
- 美國 伊利諾大學香檳校區分子生理所 心臟分子醫學博士(1995-1998)
- 美國 伊利諾大學香檳校區分子生理所 心臟分子醫學博士後研究(1998-1999)

► 簡介

黃志揚博士於1987畢業於輔仁大學食營系完成學士學位，同年以榜首進入陽明大學生理所攻讀心臟學內分泌碩士學位，1989年獲陽明大學碩士畢業生最高榮譽伊甸諾論文獎，並於1989年任職39期預官訓實習連長，後轉任營站主任，於1991年完成義務役少尉軍階義務。1992年申請獲五所美國大學博士班研究獎學金，選擇美國伊利諾大學香檳城分子生理所提供之全額獎助學金，加入當時任美國癌症協會副主席（現任美國內分泌主席）Benita. S. Katazenbogen 教授實驗室完成乳癌分子生物學碩士學位。1995年至Dennis E. Buetow 教授實驗室轉攻心臟分子訊息生物學，於1998年獲得伊利諾大學博士學位，並於原實驗室繼續擔任博士後研究員一年。於1999年八月回台，首任職於台中中山醫學大學擔任助理教授一職，於2002年8月升任部定副教授，並於2004年8月兼任創新育成中心主任，2005年10月正式榮升部定教授一職，並於2000-2005間同時擔任國立中正大學分生所兼任教授。2006年8月獲中國醫藥大學聘任教授兼任基礎醫學研究所所長，另於2009年8月同時兼任副研發長一職，2005年迄今同時擔任亞洲大學暨宏光科大兼任教授，2013年迄借調亞洲大學生科系特聘教授兼研發處研發長，2016年並兼任國際及兩岸教育學院院長。2018年於中國醫藥大學附設醫院醫研部成立外泌體暨粒線體疾病醫學研究中心並擔任中心主任。。目前研究主題包含探討類胰島素生長因子接受體（IGF-IR）調控心肌細胞存活及IGF-IIR誘發心肌細胞凋亡機轉探討，並研究女性雌激素及其受體之心肌保護機轉，同時進行多種癌症抑制，神經再生及中醫藥之研究。目前主持（含共同）多件國科會計畫，及校內外合作計劃，同時擔任國科會計畫初審及覆審委員，考選部高考出題及審題委員，衛生福利部食品藥物管理署[健康食品審議小組] 審議委員，中醫大亞洲醫學雜誌及BioMedicine副主編，中國生理學雜誌（SCI），調適醫學雜誌，World Journal of Oncology, World Journal of Molecular Biology等編輯委員，中國生理學會第23-25屆理事及調適醫學會第1&2屆理事。至2019年共發表SCI - papers (>450篇)。





The background of the image is a photograph of a historic stone building, likely a university hall, with a prominent red-tiled tower. The building is surrounded by green trees and white flowers in the foreground. A large purple circle is overlaid on the left side of the image, containing text and two checkmarks.

How to Get Into University of Illinois Urbana-Champaign

ACT and SAT Scores,
GPA, and More!



[Home](#)[Undergraduate](#)[Graduate](#)[Professional Programs](#)[Print / Download Options](#)

2020-2021
Academic Catalog

[HOME](#) > [GRADUATE](#) > MOLECULAR & INTEGRATIVE PHYSIOLOGY, PHD

[General Information](#)[Undergraduate](#)[Graduate](#)

**Molecular & Integrative
Physiology, PhD**

Molecular & Integrative Physiology, PhD

[Overview](#)[Degree Requirements](#)[Course List](#)

for the degree of Doctor of Philosophy in Molecular & Integrative Physiology

[Molecular & Integrative
Physiology](#)

[COVID-19 Information](#)

[Faculty](#)

[Graduate Program](#)

[Newsletter](#)

[Awards](#)

[Giving](#)

[Contact Us](#)

[School of MCB](#)

[Newsletter 2019 \(PDF\)](#)



Welcome to Molecular and Integrative Physiology

In this post-genomic era, physiology is uniquely poised at the nexus between molecular function and whole animal integration with the goal of understanding how the functions of thousands of encoded proteins serve to bring about the highly coordinated behavior of cells and tissues underlying physiological functions in animals and how their dysfunction may lead to disease. Research and graduate training in the Department of Molecular & Integrative Physiology is focused on understanding the regulation and function of gene products at multiple levels of biological organization, from molecules and macromolecular complexes to cells, tissues, and whole organisms. With the tools of molecular genetics and modern systems biology, physiologists are at the forefront of dramatic advances currently occurring in life and biomedical sciences. Advanced training in molecular and integrative physiology will provide the necessary foundation to prepare for a career in this exciting area of functional biology.



Claudio Grosman, Head

MIP News



Researchers: Breast Cancer Deadlier in Heart Attack Survivors

Breast cancer patients are 60 percent more likely to die of cancer after surviving a heart attack, according to a new study published in Nature Medicine.

Researchers uncover a key mechanism for



524 Burrill Hall, 407 South Goodwin Avenue, Urbana, IL 61801





I Cancer Center
at Illinois

“Benita’s extensive knowledge and international acclaim will give critical guidance for the Cancer Center at Illinois to accelerate cancer research by driving scientific collaborations, establishing shared resources, and translation.”

- Rohit Bhargava, CCIL Director

BENITA KATZENELLENBOGEN

Senior Advisor to the Director

Professor of Molecular and Integrative Physiology

Dennis E. Buetow, Ph.D. (Co-Founder/President)



Dennis Edward Buetow

University of Illinois, Urbana-Champaign | UIUC
Department of Molecular and Integrative Physiology

Dr. Buetow served at the National Institutes of Health (NIH) and at Baltimore City Hospitals in Maryland from 1959 to 1965. Since 1965, he was employed as a Professor in the Department of Molecular and Integrative Physiology at the University of Illinois at Urbana-Champaign, USA (UIUC). He was Head of this Department from 1983-1988 and Interim Head from 1991-1992. Currently, he is Professor Emeritus in this Department where he continues to do research on a daily basis. He received his PhD in 1959 from the University of California, Los Angeles (UCLA). Dennis was elected as a Fellow of the Gerontological Society and of the American Association for the Advancement of Science. He has served on numerous national and university committees and was Editor for the Academic Press series "Cell Biology, a Series of Monographs" among over 100 other book chapters and journal articles on his research. He has presented numerous seminars and addresses in the US, Europe and Asia.

PERSPECTIVES

NATURE REVIEWS | **CANCER** 2018

OPINION

Structural underpinnings of oestrogen receptor mutations in endocrine therapy resistance

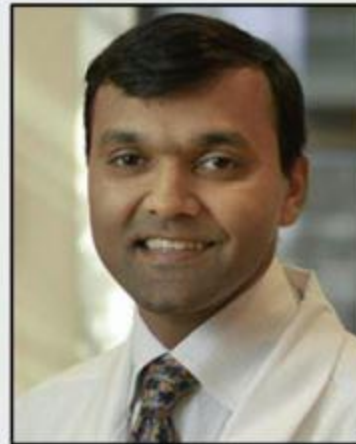
John A. Katzenellenbogen, Christopher G. Mayne, Benita S. Katzenellenbogen, Geoffrey L. Greene and Sarat Chandarlapaty



Chris Mayne



Geof Greene



Sarat Chandarlapaty



Benita Katzenellenbogen

韓弗行 博士後研...



中心主任 黃志揚...



盧正祐助理研究員...



林佑融 助理研究...



徐布助理研究員



羅米斯博士後研究...



許瓊鴻博士後研究...



盧正祐助理研究員...





Search

[Advanced](#) [Create alert](#) [Create RSS](#)

[User Guide](#)

Save

Email

Send to

Sorted by: Publication date ↓

Display options

MY NCBI FILTERS

RESULTS BY YEAR



TEXT AVAILABILITY

- ☐ Abstract
- ☐ Free full text
- ☐ Full text

ARTICLE ATTRIBUTE

- ☐ Associated data

ARTICLE TYPE



511 results

- ☐ 1 [Protective effects of diallyl trisulfide \(DATS\) against doxorubicin-induced inflammation and oxidative stress in the brain of rats.](#)
Cite Leung WS, Kuo WW, Ju DT, Wang TD, Shao-Tsu Chen W, Ho TJ, Lin YM, Mahalakshmi B, Lin JY, **Huang CY.**
Share Free Radic Biol Med. 2020 Jul 31;S0891-5849(20)31154-0. doi: 10.1016/j.freeradbiomed.2020.07.018. Online ahead of print. PMID: 32745770
- ☐ 2 [Parkinson's disease a futile entangle of Mankind's credence on an herbal remedy: A review.](#)
Cite Chang YM, Manoj Kumar M, Lu CY, Te Tsai C, Tsai CC, Liao PH, Lin SL, Chang CC, Mahalakshmi B, Kuo WW, **Huang CY.**
Share Life Sci. 2020 Jul 3;257:118019. doi: 10.1016/j.lfs.2020.118019. Online ahead of print. PMID: 32629002 Review.
- ☐ 3 [Heat-Killed Lactobacillus reuteri GMNL-263 Inhibits Systemic Lupus Erythematosus-Induced Cardiomyopathy in NZB/W F1 Mice.](#)
Cite Yeh YL, Lu MC, Tsai BC, Tzang BS, Cheng SM, Zhang X, Yang LY, Mahalakshmi B, Kuo WW, Xiang P, **Huang CY.**

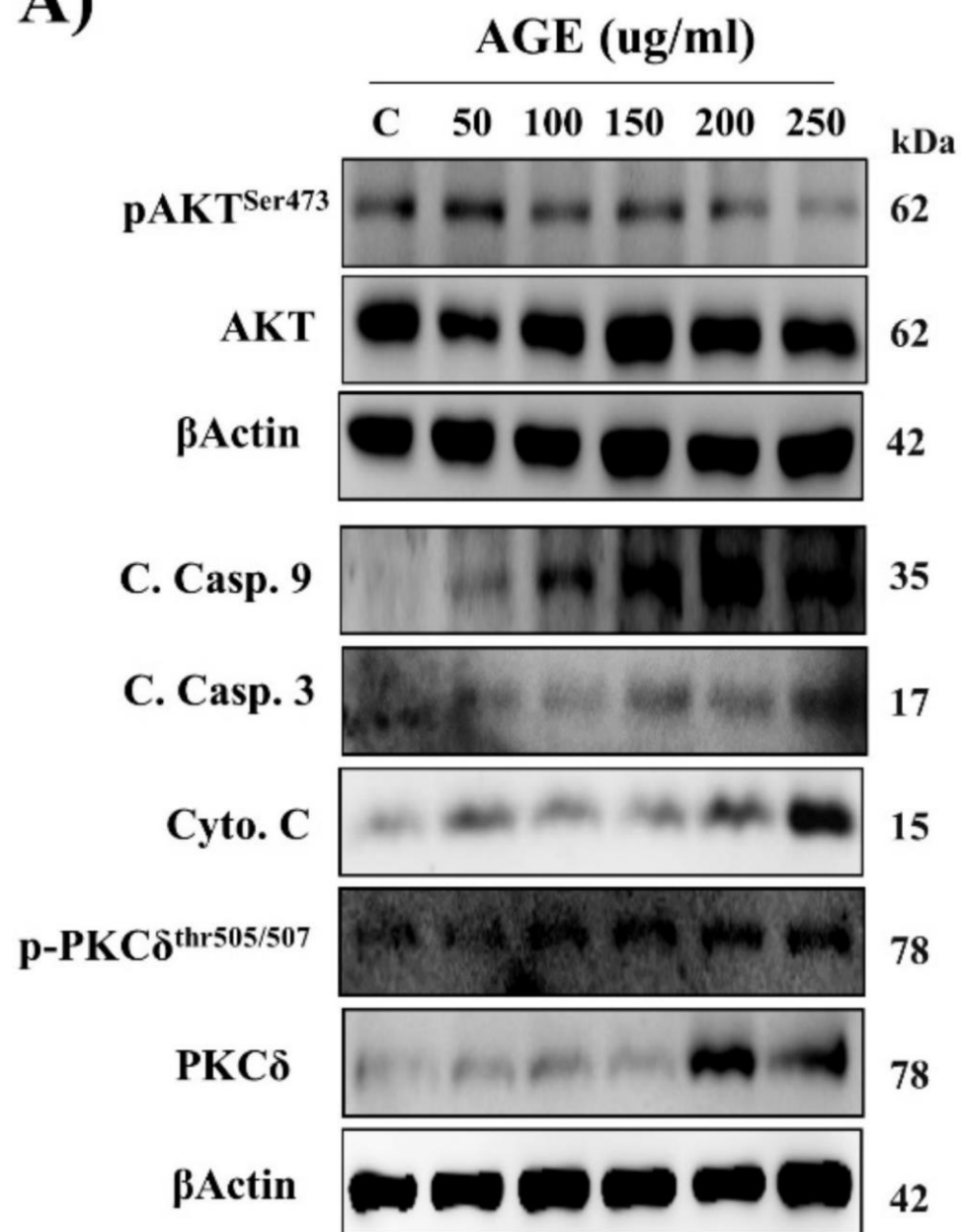


Article

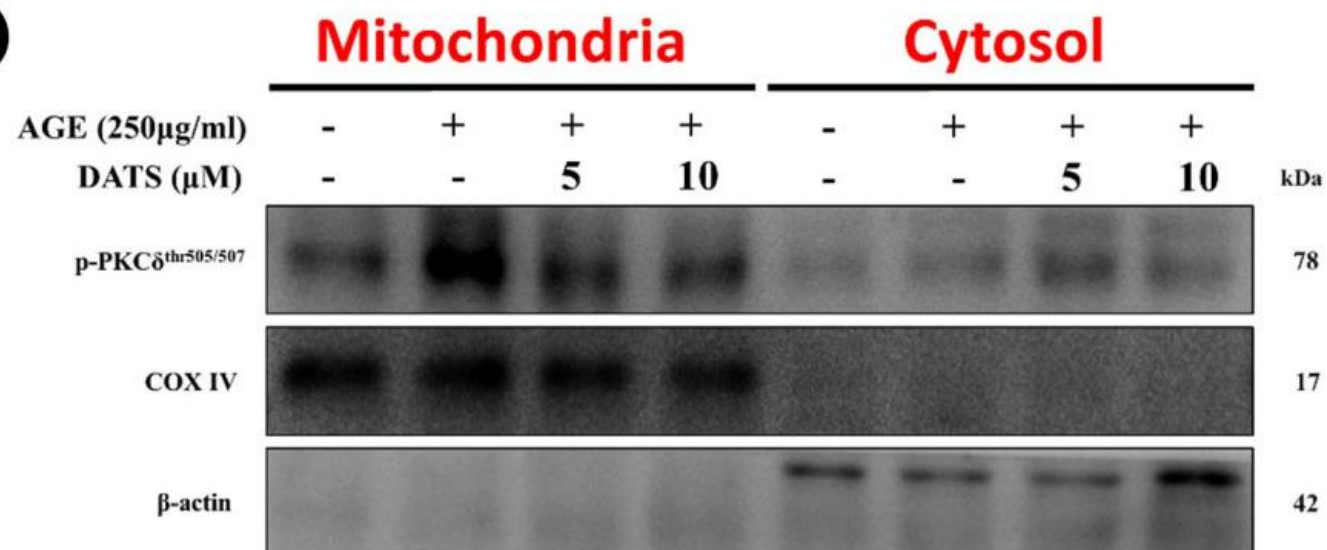
Diallyl Trisulfide (DATS) Suppresses AGE-Induced Cardiomyocyte Apoptosis by Targeting ROS-Mediated PKC δ Activation

Dennis Jine-Yuan Hsieh ^{1,2}, Shang-Chuan Ng ³, Ren-You Zeng ³, Viswanadha Vijaya Padma ⁴,
Chih-Yang Huang ^{5,6,7,8,9,†}  and Wei-Wen Kuo ^{3,*,†} 

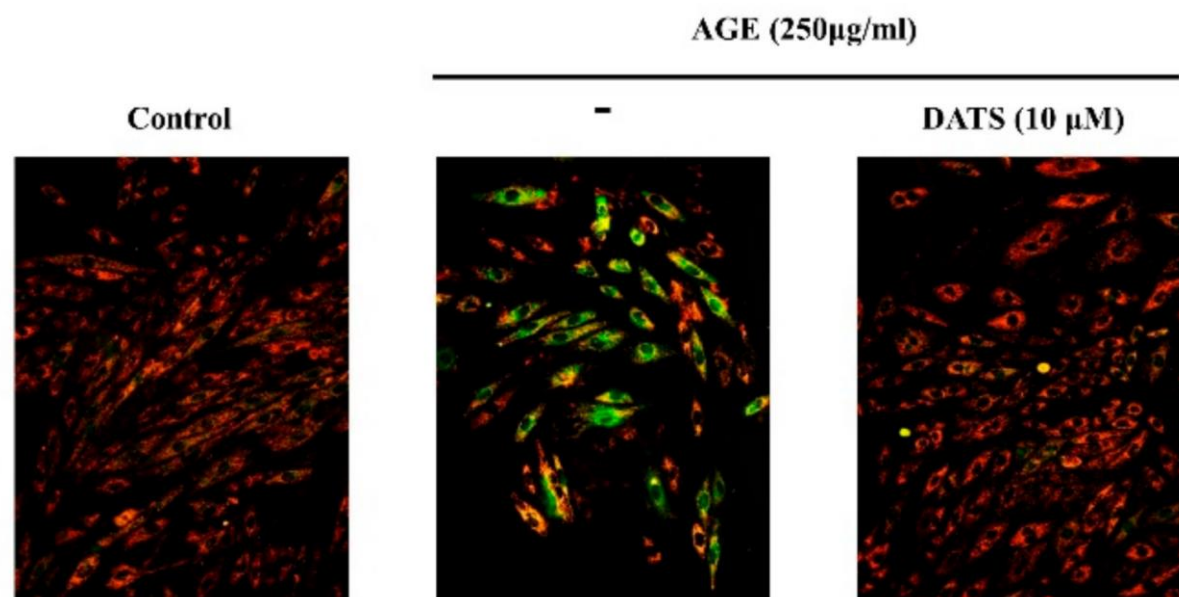
A)



E)



C)

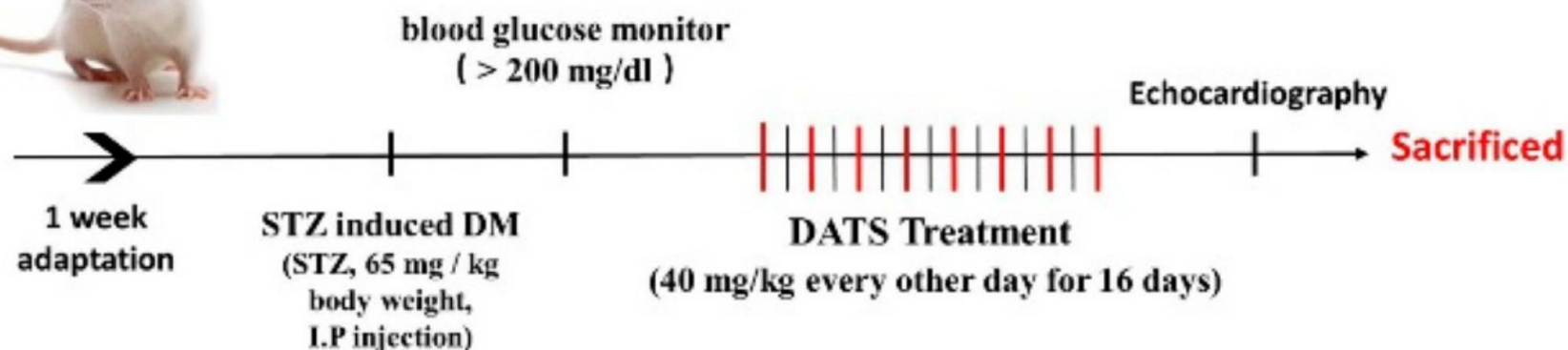


A)

Wistar rats
(4-week-old, male)



Control (n=6)
DM (n=6)
DM+DATS (n=6)

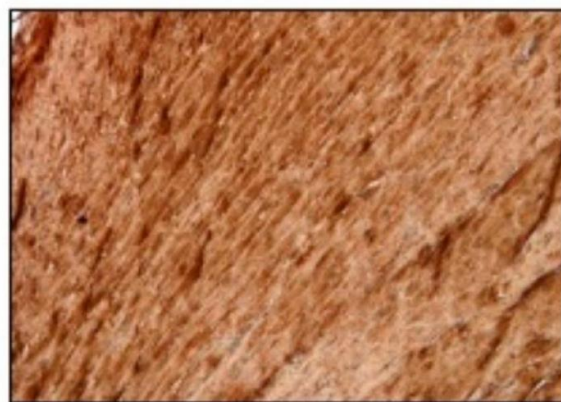
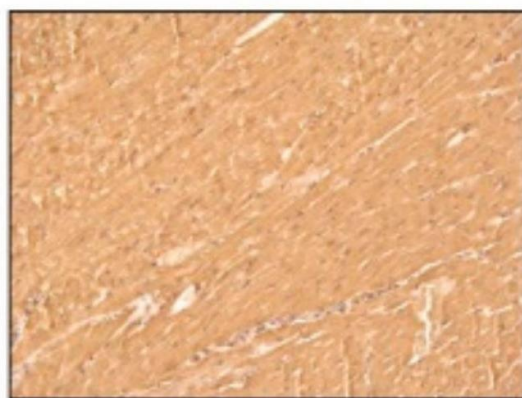


B)

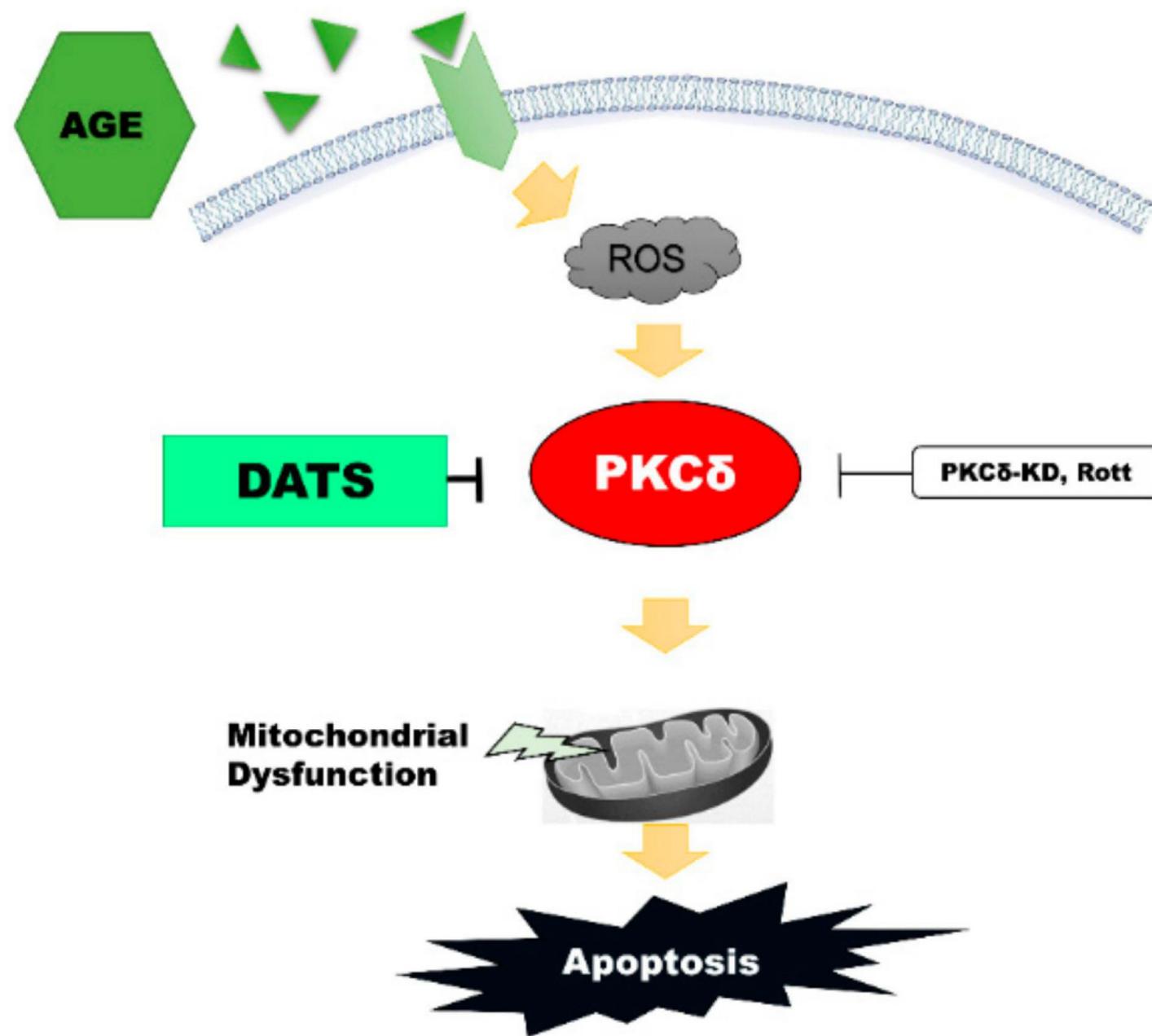
C

DM

DM+DATS



p-PKC $\delta^{\text{thr505/507}}$





麻醉部感恩黃志揚副院長